

What do you know about Alzheimer's in U.S.?

Question 1

Alzheimer's is the _____ leading cause of death in the United States.

- a. 4th
- b. 5th
- c. 6th
- d. 7th



Question 2

How many Americans are living with Alzheimer's?

- a. 3.2 million
- b. 5.8 million
- c. 6.9 million
- d. 8.3 million



Question 3

More than _____ million Americans provide unpaid care for people with Alzheimer's.

- a. 10
- b. 12
- c. 16
- d. 20



Question 4

Between 2000 and 2017 deaths from Alzheimer's increased by...

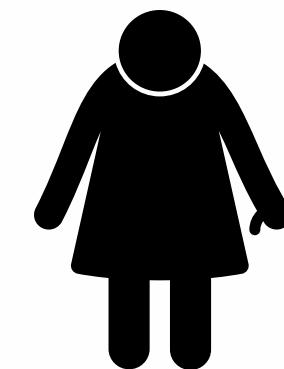
- a. 50%
- b. 83%
- c. 90%
- d. 145%



Question 5

1 in _____ seniors dies with Alzheimer's or another form of dementia.

- a. 2
- b. 3
- c. 4
- d. 5



Question 6

Every _____ seconds someone in the U.S. develops Alzheimer's.

- a. 25
- b. 35
- c. 55
- d. 65



Question 7

What percent of seniors say it's important to have their thinking or memory checked?

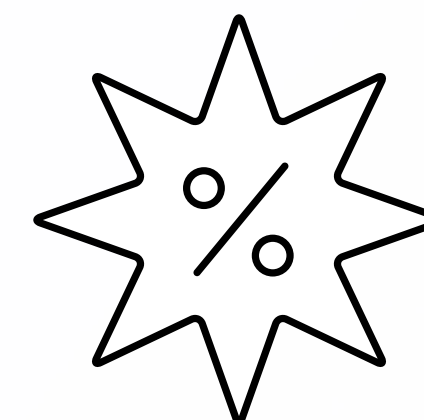
- a. 25%
- b. 41%
- c. 65%
- d. 82%



Question 8

What percent of seniors say they receive regular cognitive assessments?

- a. 16%
- b. 22%
- c. 41%
- d. 75%



Question 9

Alzheimer's kills more than _____ cancer and prostate cancer.

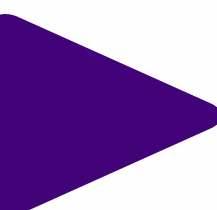
- a. skin
- b. breast
- c. bone
- d. ovarian



Answers:

1. a (6th) 2. b (5.8 million) 3. c (16) 4. d (145%) 5. b (3) 6. d (65) 7. d (82%) 8. a (16%) 9. b (breast)

continued on other side

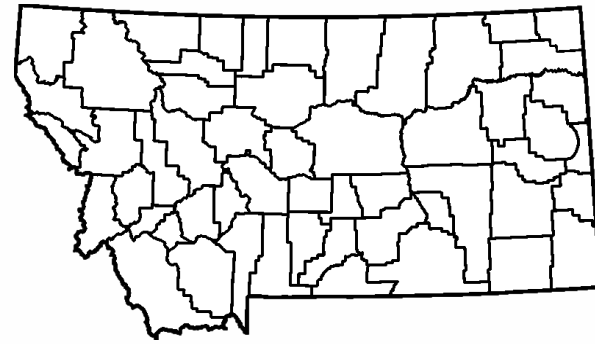


What do you know about Alzheimer's in Montana?

Question 10

How many Montanans died from Alzheimer's in 2017?

- a. 146
- b. 285
- c. 432
- d. 576



Question 11

In 2019, what number of people in Montana aged 65 - 74 have Alzheimer's?

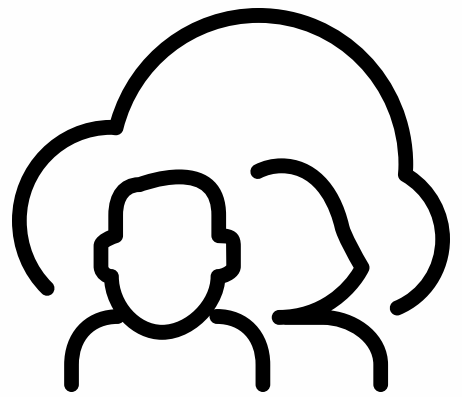
- a. 1,500
- b. 3,300
- c. 4,500
- d. 6,000



Question 12

As of 2018, how many caregivers are in Montana?

- a. 20,000
- b. 30,000
- c. 40,000
- d. 50,000



Question 13

What is the average per capita Medicare spending on people with dementia in Montana?

- a. \$12,436
- b. \$15,235
- c. \$17,455
- d. \$19,269



Question 14

What percent of people in the hospice have a primary diagnosis of dementia in Montana?

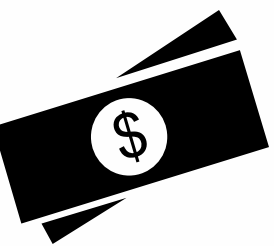
- a. 5%
- b. 8%
- c. 10%
- d. 13%



Question 15

How many millions of dollars in 2019 does Medicaid spend for caring for people with Alzheimer's in Montana?

- a. \$20 million
- b. \$55 million
- c. \$72 million
- d. \$157 million



Alzheimer's Association®

24/7 Helpline 1-800-272-3900

www.alz.org/montana

Resources

alzheimers.msuextension.org

Click Additional Materials



Montana State University Extension is an ADA/EO/AA/Veteran's Preference Employer and Provider of Educational Outreach.

Developed By: Keri Hayes, MSU Extension Economics Publications Assistant

Answers:

10. b (285) 11. b (3,300) 12. d (50,000) 13. c (\$17,455) 14. d (13%) 15. d (\$157 million)

Source: 2019 Alzheimer's Association® Facts and Figures at alz.org/facts.